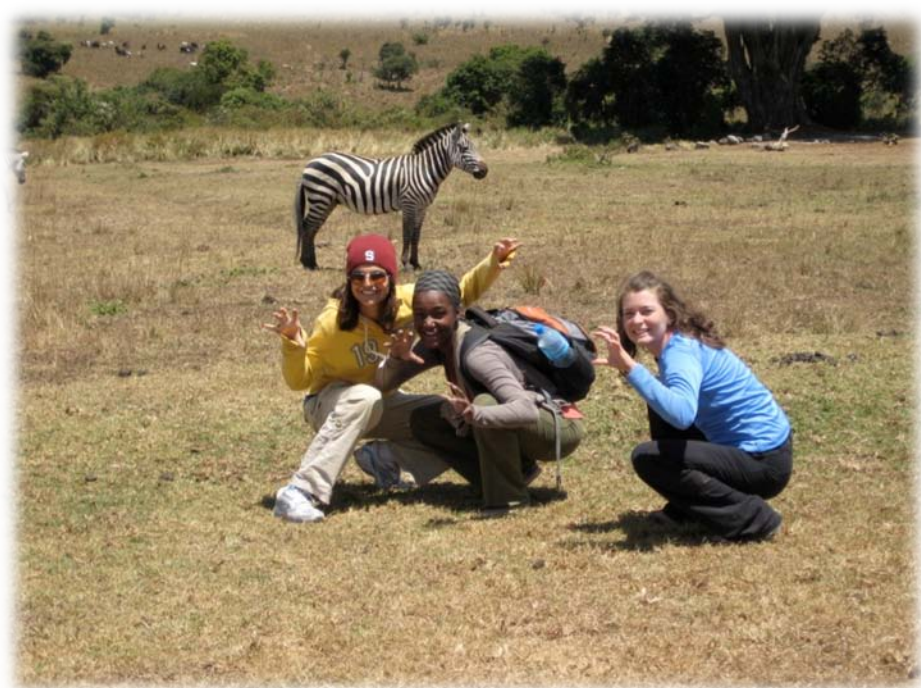


Child Health Research Networking Workshop

McMaster University
Department of Pediatrics
October 20, 2010



Leila Amin, MSc(OT), MSc Cand. Rehabilitation Science



Master's Thesis

1. Transition Readiness Study
 - Multi-centre study including McMaster Children's Hospital and The Hospital for Sick Children
 - Screen for patients at risk of failing to attend follow-up appointments into adulthood
 - Methods: Systematic Review, Qualitative Interviewing, Expert Input
 - Psychometrics using modern methods (i.e., Rasch Analysis)

SickKids®



**McMaster
Children's Hospital**

Master's Thesis

2. Rasch Analysis of PedsQL Generic Module (child and parent-proxy)
 - Secondary analysis of data collected on children with cancer, parents of children with cancer and children with ITP.
 - A. Is the PedsQL (Generic module) a valid and reliable tool to use with a sample of cancer patients?
 - B. Do children with cancer and their parents report discordant QoL using the PedsQL?
 - C. Do the items of the PedsQL work the same across different diagnostic groups (cancer and ITP)?



Challenges

1. Timelines

- Discuss a back-up plan

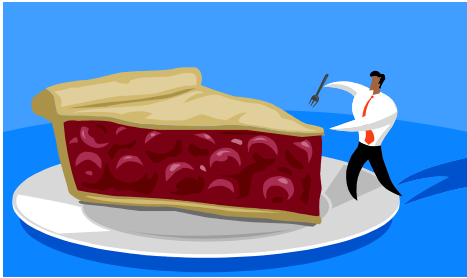


2. Unique Contribution

- What unique intellectual contribution are you making to your supervisor's funded study?

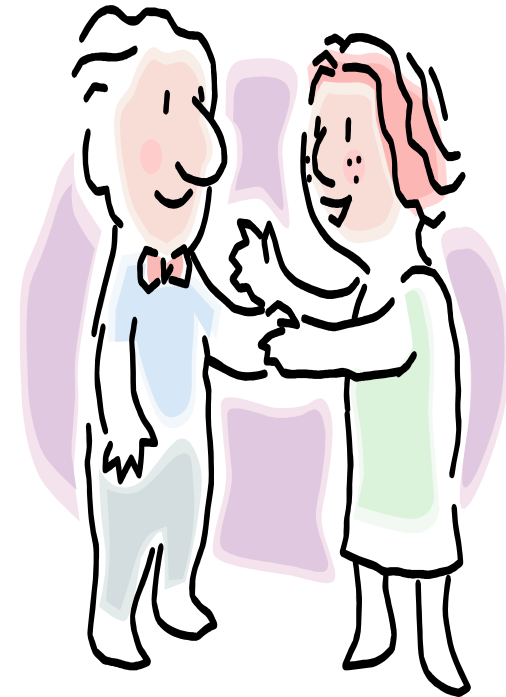






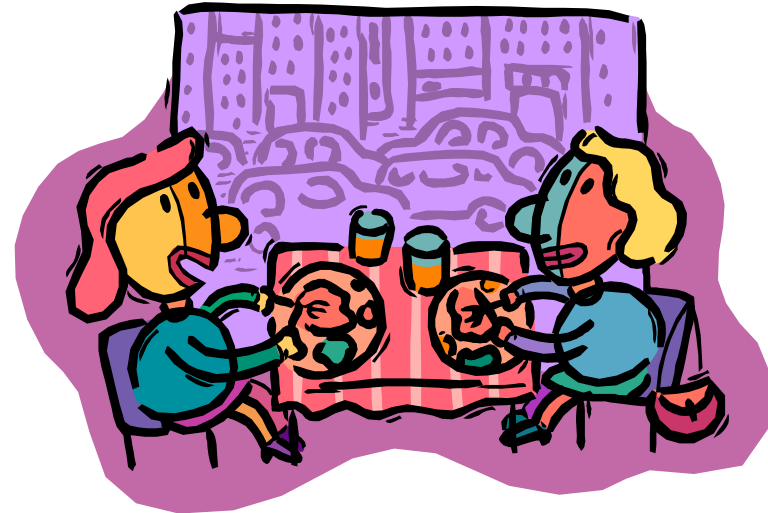
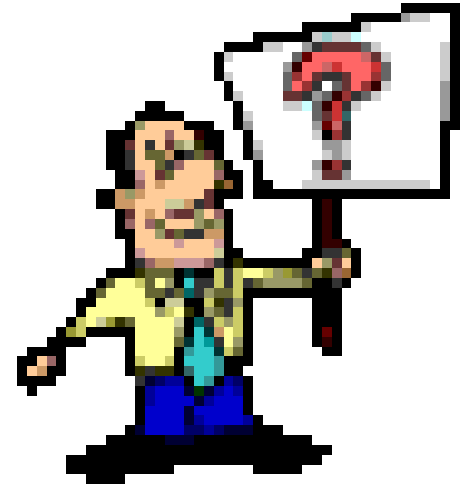
Rewards

- Meeting investigators from other centers
 - A chance to network and build relationships for future research opportunities
- Increased opportunity to hear about and to be invited to upcoming conferences in your area of interest
 - Voice your career goals to the people you work with so they can help connect you with good resources



Tips for a Successful Research Career

1. Ask questions
2. Be “audacious”
 - *L.Granek, October 13, 2010*
3. Limit disappointment
4. Collaborations enrich everything



Research is fun!!!

