

June 13th – 15th, 2018

Royal Botanical Gardens

680 Plains Road West, Burlington, ON

FREE PARKING

The Division of Palliative Care Presents

Palliative Care

AN IN DEPTH LEARNING EXPERIENCE

Planning Committee

Nadia R. Plach, MD, PhD, CCFP, FCFP
CO-CHAIR
Palliative Care Consultant
Joseph Brant Hospital
Associate Professor
Division of Palliative Care
Department of Family Medicine
McMaster University, Hamilton, ON

Kathleen Willison, RN, MSc, CHPCN(C)
CO-CHAIR
Clinical Nurse Specialist
Palliative Care
St. Joseph's Healthcare Hamilton
Assistant Clinical Professor
School of Nursing and
Associate Member
Division of Palliative Care
Department of Family Medicine
McMaster University, Hamilton, ON

Teri Crockford, RN, BScN, MS, CHPCN(c)
Clinical Nurse Specialist
Assistant Clinical Professor
School of Nursing and
Associate Member
Division of Palliative Care
Department of Family Medicine
McMaster University, Hamilton, ON

Hun-Je Park, MD
Palliative Care Consultant
Joseph Brant Hospital
Juravinski Hospital
Assistant Clinical Professor (Adjunct)
Division of Palliative Care
Department of Family Medicine
McMaster University, Hamilton, ON

Tracy MacKinnon, BA
Education Program Associate
Division of Palliative Care
Department of Family Medicine
McMaster University, Hamilton, ON

Valerie Spironello, MSW, RSW
Social Worker
Assistant Clinical Professor (Adjunct)
Division of Palliative Care
Department of Family Medicine
McMaster University, Hamilton, ON

Carol Sweeney, BA, BSW, RSW
Social Worker
St. Joseph's Healthcare Hamilton
Assistant Clinical Professor (Adjunct)
Division of Palliative Care
Department of Family Medicine
McMaster University, Hamilton, ON

Ann Vander Berg, MTS, RP
Chaplain, Spiritual Care Specialist
Juravinski Hospital and Cancer Centre
Hamilton Health Sciences
Assistant Clinical Professor (Adjunct)
Division of Palliative Care
Department of Family Medicine
McMaster University, Hamilton, ON

Robert Vukovich, BScPhm, Pharm D, CGP
Consultant Pharmacist
Classic Care Pharmacy
A Division of Centric Health, Burlington, ON

Angela Silla
CHSE Acting Program Manager
Continuing Health Sciences Education
McMaster University, Hamilton, ON

Natalie Park
CHSE Coordinator
Continuing Health Sciences Education
McMaster University, Hamilton, ON

Learning Objectives

By attending this activity, participants will be able to:

- Manage complex physical, emotional, ethical and social issues, including pediatric to geriatric populations.
- Develop enhanced collaborative practice skills and forge new inter-professional relationships.
- Apply a palliative approach in end of life care for cancer and chronic end-stage illnesses, including cardiac, renal, respiratory and neurological conditions.

Target Audience

Health Care Professionals (Physicians, Nurses, Spiritual Care Providers, Social Workers and other disciplines) who:

- Are providing a palliative approach to care within various settings: Primary Care, Long Term Care, Acute Care, Home Care and Hospice.
- Have completed or plan to complete the Pallium LEAP (Learning Essential Approaches to Palliative and End-of-Life Care) prior to June.

www.fhs.mcmaster.ca/palliativecare/leap.html

www.fhs.mcmaster.ca/conted/palliativecare.html

For More Information

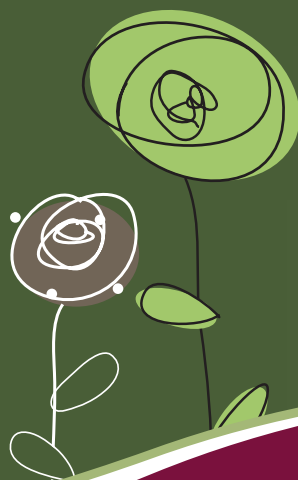
NATALIE PARK, CHSE Coordinator

McMaster University, Continuing Health Sciences Education
905-525-9140 ext. 20763 • parkna@mcmaster.ca



Agenda 2018

- *Advanced Cancer Pain and Symptom Management*
- *Meeting the Palliative Care Needs of The Frail Elderly*
- *Medical Marijuana*
- *Palliative Approach to Stroke*
- *Palliative Care in Pediatrics*
- *Interventional Pain Management in Palliative Care*
- *Bereavement Support*
- *Skilled Conversations at the End of Life*
- *Palliative Approach to Renal Care*
- *Palliative Approach in Addiction*
- *Deprescribing at End of Life*
- *Palliative Approach to MAiD*
- *Hot Topics in Palliative Care*
- *Music Therapy & Legacy*



Testimonials

“Excellent course - Time and money well spent.”

“Absolutely wonderful speakers! Great interactive opportunities.”

“I loved all the aspects to this conference/workshop.”

“A wonderful and very informative 3 days!”

“Food was fabulous for all 3 days and the location was perfect, both environment and season.”

The Royal Botanical Gardens is located at 680 Plains Road West, on the border of Burlington and Hamilton in Ontario, Canada.

Directions

From Toronto and East

- Queen Elizabeth Way to Highway 403 West (Hamilton).
- Exit at Waterdown Road. Travel 800 metres south along Waterdown Road to Plains Road West.
- Turn right onto Plains Road West and travel 2km.
- Turn left into the RBG parking lot.

From Kitchener-Waterloo and West including Detroit (U.S.A.)

- Highway 401 East to Highway 6 South.
- Follow Highway 6 South for about 25 km.
- Exit onto York Road, make a left and then a right on the new Plains Road and drive south crossing over the 403.
- Turn left at the lights to continue on Plains Road West for about 1 km, passing the glass building.
- Turn right into the RBG parking lot.

From the Niagara Region and Buffalo (U.S.A.)

- Queen Elizabeth Way to Highway 403 West (Hamilton).
- Exit at Waterdown Road.
- Travel 800 metres south along Waterdown Road to Plains Road West.
- Turn right onto Plains Road West and travel 2km.
- Turn right into the RBG parking lot.

3 Days in
Palliative Care
AN IN DEPTH LEARNING EXPERIENCE



For Family Physicians

This course has been developed in keeping with the Ontario Ministry of Health's goal to provide Palliative Care education for Family Physicians that:

- *Enhances skill & knowledge in order to maximize the quality of life in patients who require palliative care*
- *Recognizes the primacy of care recipients & their families*
- *Facilitates & mobilizes the development of community support networks*

Format

Combination of lectures & small group workshops in an informal, comfortable, retreat-like setting. Presenters & Resource Leaders will include specialists in Palliative Care, Ethics, Law, Social Work, Spirituality, Oncology & others.

Liability

Continuing Health Sciences Education (CHSE) hereby assumes no liability for any claims, personal injury, or damage:

- *To any individual attending this activity.*
- *That may result from the use of technologies, program, products &/or services at this activity.*
- *That may arise out of, or during this activity.*

Disclosure of Potential Conflicts of Interest

In keeping with accreditation guidelines, McMaster University, Continuing Health Sciences Education Program requires all speakers and planning committee members participating in this event to disclose any involvement with industry or other organizations that may potentially influence the presentation of the educational materials or program being offered. Disclosure must be done verbally and using a slide prior to the speaker's presentation.

Cancellation Policy

McMaster University reserves the right to cancel a course due to insufficient registration or any circumstances that are beyond our control. Cancellations received before **Wednesday, May 23, 2018** will be refunded less a 25% administrative fee to a maximum of \$50.00. No refunds will be issued for cancellations received after this date.

Confirmation of Registration

A receipt confirming of your registration will be sent prior to the course via email. Your registration is not complete unless a confirmation email is received. If you have not received a confirmation within 7 days of registration, please contact the CHSE office.

Activity Package

As the registrant your activity package includes {breakfast, nutritional breaks, and lunch} Your activity lanyard must be worn at all times throughout the day. If you have a guest accompanying you to the activity, their meals are at their own cost and will be billed directly.

Photography

Candid photos may be taken at the activity. Your registration implies your permission for these photos to be used for promotional material. Individuals in photographs will not be identified.

Accreditation Statement

McMaster University, Continuing Health Sciences Education Program (CHSE) is fully accredited by the Committee on Accreditation of Continuing Medical Education (CACME) to provide CFPC Mainpro+ and RCPSC Maintenance of Certification (MOC) study credits for Continuing Medical Education.

This one-credit-per-hour Group Learning program meets the certification criteria of The College of Family Physicians of Canada and has been certified by the McMaster University Continuing Health Sciences Program for up to **16.25 Mainpro+ credits**.

Each healthcare provider should claim only those hours of credit that he/she actually spent in the educational activity.

*****This talk is not accredited for Mainpro+ Medical Cannabis in Palliative Care - Dr. Jun-Je Park**



